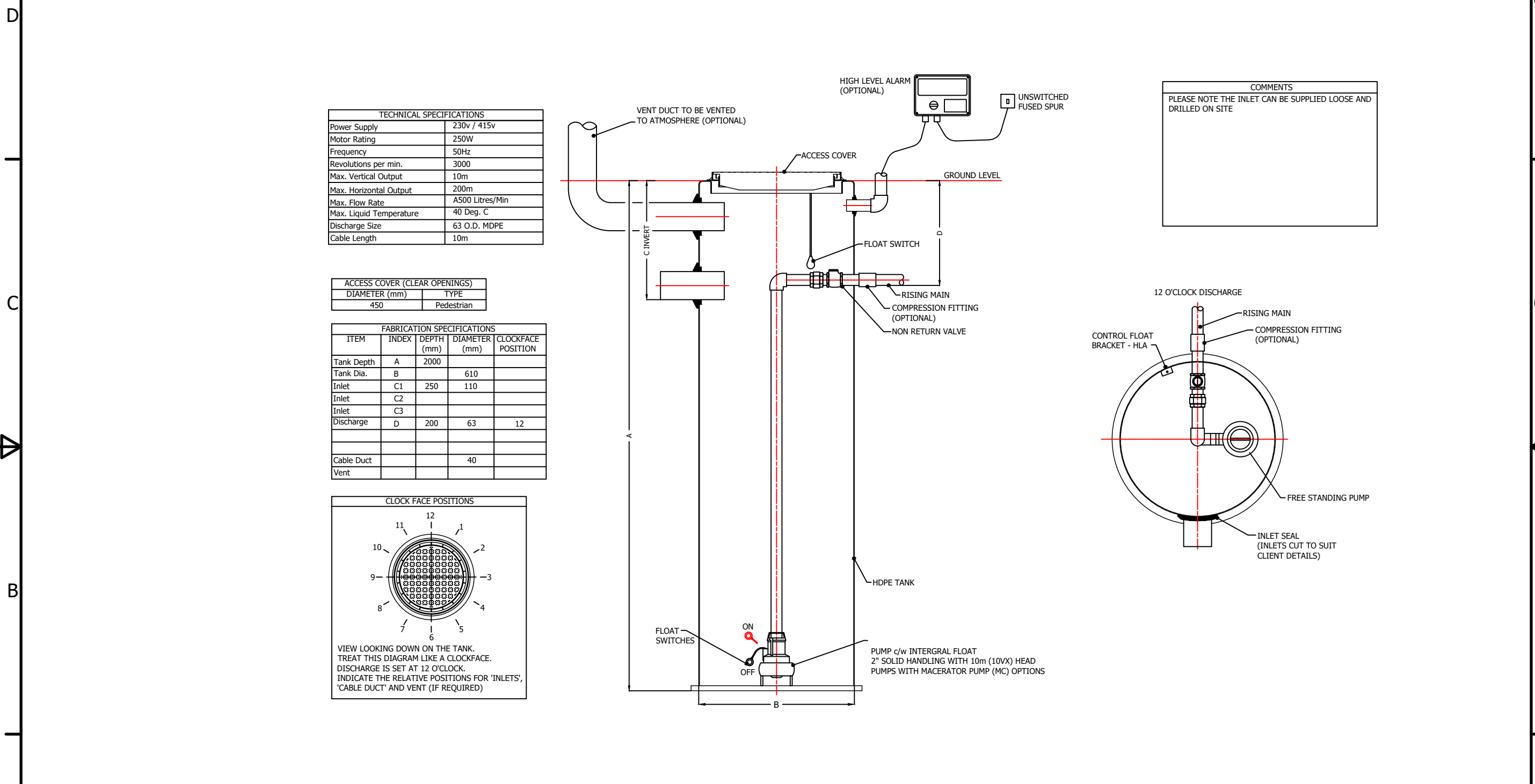


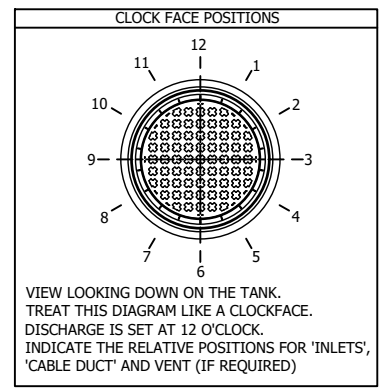
6 | 1 | 5 | 1 | 4 | 3 | 1 | 2 | 1



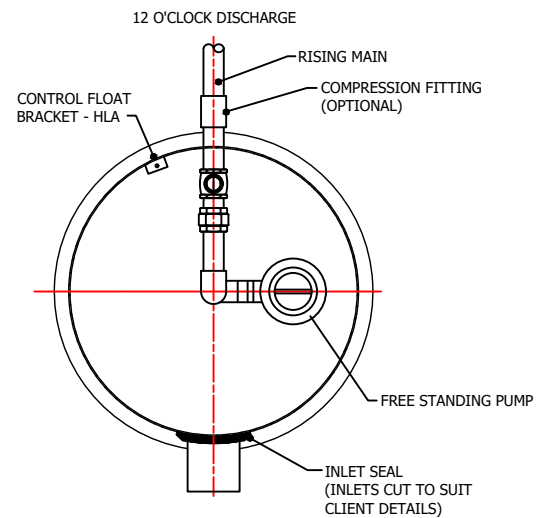
TECHNICAL SPECIFICATIONS	
Power Supply	230v / 415v
Motor Rating	250W
Frequency	50Hz
Revolutions per min.	3000
Max. Vertical Output	10m
Max. Horizontal Output	200m
Max. Flow Rate	A500 Litres/Min
Max. Liquid Temperature	40 Deg. C
Discharge Size	63 O.D. MDPE
Cable Length	10m


ACCESS COVER (CLEAR OPENINGS)	
DIAMETER (mm)	TYPE
450	Pedestrian

FABRICATION SPECIFICATIONS				
ITEM	INDEX	DEPTH (mm)	DIAMETER (mm)	CLOCKFACE POSITION
Tank Depth	A	2000		
Tank Dia.	B		610	
Inlet	C1	250	110	
Inlet	C2			
Inlet	C3			
Discharge	D	200	63	12
Cable Duct			40	
Vent				



COMMENTS
PLEASE NOTE THE INLET CAN BE SUPPLIED LOOSE AND DRILLED ON SITE



DRAWN BY Jc	DRAWING DATE (DD/MM/YY) 04/03/21	EFFECTIVE DATE: (DD/MM/YY) 04/03/21	PRODUCT NAME: Tricel Micro 600L Single	PRODUCT NUMBER: 104455	ACC NUMBER:	
TOLERANCE: +/- 5		MATERIAL: MDPE	SCALE: NOT TO SCALE	DRAWING TYPE: FG		
UNITS: mm		DRWG NO: N/A	TANK REVISION: 0	REV. NO. 0		PAGE SIZE:A4
JOB NUMBER: N/A		WEIGHT (KG): 46	PROJECT NO:	ECO NO:		COUNTRY: UK

6 | 1 | 5 | 1 | 4 | 3 | 1 | 2 | 1